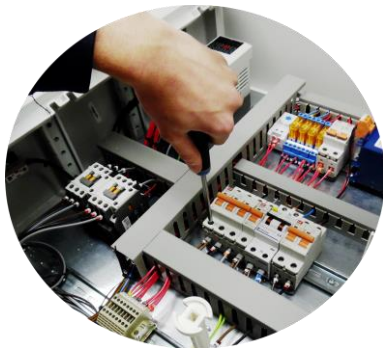




WATER SOLUTIONS

Geoquip Water Solutions

Company Profile



geoquip

Water Solution Specialists

www.geoquipwatersolutions.com

Tel: +44(0)1473 462046 Email: info@geoquipservices.co.uk
Website: www.geoquipwatersolutions.com



Company History

Geoquip Water Solutions based in Ipswich UK was founded in 1995 and are specialist suppliers to the water industry, providing equipment, plant and technical solutions for water supply systems and water projects worldwide.

Experts in the extraction and distribution of water.

Our lines consist of the following;

- **Water Supply and Control**
- **Well Rehabilitation**
- **Well Inspections**
- **Telemetry**
- **Export Services**
- **Hydrodif Fittings**



geoquip

Water Solution Specialists

www.geoquipwatersolutions.com

Tel: +44(0)1473 462046 Email: info@geoquipservices.co.uk
Website: www.geoquipwatersolutions.com





Product Overview

Providing our customers with complete water solutions for their water systems. From pumps to fittings we can assist with your application and systems requirements.

geoquip

Water Solution Specialists

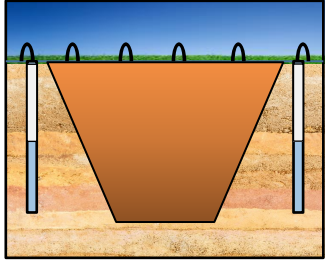
www.geoquipwatersolutions.com

Tel: +44(0)1473 462046 Email: info@geoquipservices.co.uk
Website: www.geoquipwatersolutions.com

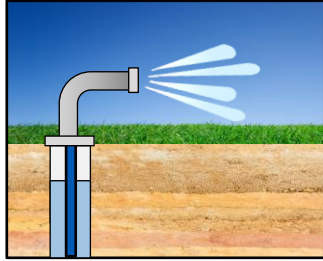


Application Sectors

We are specialist suppliers to the water industry, providing equipment, plant and technical solutions for water supply systems and water projects worldwide. Our application sectors include:



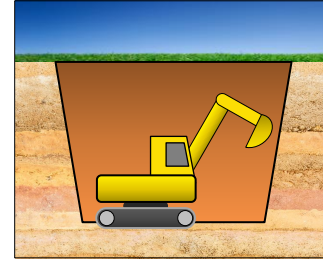
**Construction
Dewatering**



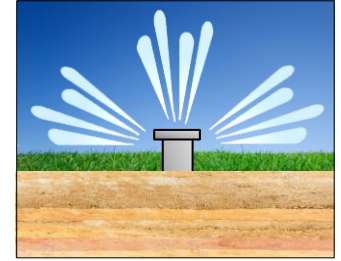
**Groundwater
Abstraction**



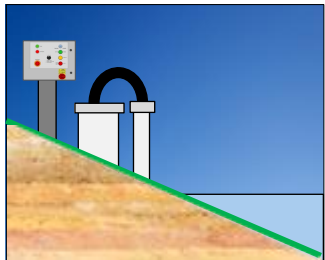
Mining



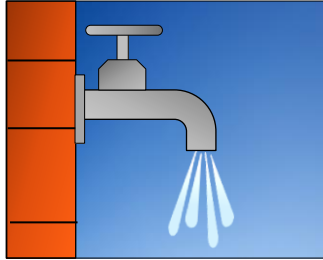
Quarrying



Irrigation



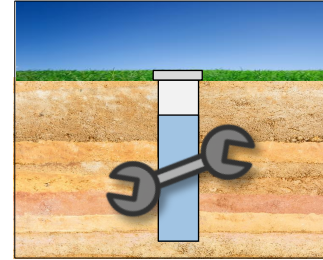
**Leachate
Pumping**



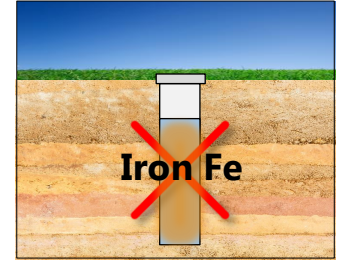
**Public/Private
Water Supply**



Geothermal



Remediation



Contamination

Water Supply & Control

Complete range of water supply and control solutions: submersible borehole pumps and motors, **ATEX** and high temperature pumps, flexible rising main, control panels, telemetry, filtering systems, pumping accessories and construction dewatering equipment.

Total solution capability for all water supply needs: off-the-shelf, specialist and custom-built packages available. Leading manufacturers used including **E-Tech**, **Subline**, **Franklin** and **Sumoto**.



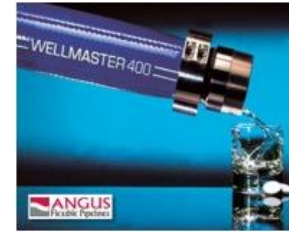
**Borehole
Submersible
Pumps**



**Special Execution
Pumps**



**Submersible Borehole
Motors**



**Wellmaster Flexible
Rising Mains**



**Control & Starter
Panels**



**Web Based Telemetry
Systems**



**Construction Dewatering
Equipment**



**Lakos Sand
Separators**



Water Meters

geoquip

Water Solution Specialists

www.geoquipwatersolutions.com

Tel: +44(0)1473 462046 Email: info@geoquipwatersolutions.co.uk
Website: www.geoquipwatersolutions.com



Borehole Pumps

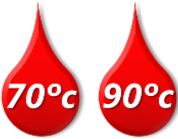



- Sizes from 3" to 12"
- Flows up to 500m³/hr
- Wide range of materials;
 - Stainless steel 304/306/907
 - Cast SS
 - Cast Iron
 - Marine Bronze
- High temperature applications
50° / 90°C
- ATEX Certified
- Special custom built units available



Special Execution Pumps (ATEX)

Widest range of specialist and custom made submersible borehole pumps, built to order with short lead times. Choice of applications. materials and certifications. All pumps built to the highest quality standards and specifically for specialist purpose. Range includes:

- **ATEX certified submersible borehole pumps to 94/9/CE Directive**
- **Pumps for hydrocarbon laden water**
- **Corrosive and saline water units**
- **Leachate borehole pumps and accessories**
- **ATEX pumps without certification**
- **High temperature borehole pumps for liquids** 
- **Solar borehole submersible pumps** 
- **Custom built borehole pumps**



geoquip

Water Solution Specialists

www.geoquipwatersolutions.com

Tel: +44(0)1473 462046 Email: info@geoquipwatersolutions.co.uk
Website: www.geoquipwatersolutions.com



Wellmaster Flexible Rising Main



Wellmaster Flexible Rising Main comes in various sizes and performance ranges, it offers exceptional strength and hydraulic efficiency. Other benefits include;

- **Fast installation and renewal**
- **Reduced transportation & storage costs**
- **Reduced operational costs**
- **Long service life**
- **Superior performance**
- **Surface construction prevents iron bacteria and oxide build-up**
- **Excellent technical support**
- **10-year manufacturer's warranty - when installed by approved installers**

ANGUS
FLEXIBLE PIPELINES

Wellmaster

geoquip

Water Solution Specialists

www.geoquipwatersolutions.com

Tel: +44(0)1473 462046 Email: info@geoquipservices.co.uk
Website: www.geoquipwatersolutions.com



Well Rehabilitation

Our **well rehabilitation** products completely remove deposits and residues that build up and cause blockages in wells, pipes, pumps and other equipment. Completely safe and fast-acting, BoreSaver improves the quality, output and flow of water supplies and extends the working life of pumps and related equipment.

BoreSaver cleans wells suffering from the following;

- **Iron oxide**
- **Build-up of iron bacteria**
- **Manganese oxide**
- **Calcium carbonate and other minerals.**

We also manufacture a purpose built **Well rehabilitation rig** with brush strings and offer accessories for a full rehabilitation solutions.



geoquip

Water Solution Specialists

www.geoquipwatersolutions.com

Tel: +44(0)1473 462046 Email: info@geoquipservices.co.uk
Website: www.geoquipwatersolutions.com



Control and Starter Panels



- Experienced team of control panel builders
- **Custom one off units to meet specific requirements**
- Custom built panels with PLC control
- **Web based telemetry systems & remote monitoring**
- Panels developed for rail infrastructure, construction dewatering, building maintenance, geothermal applications, irrigation, AD plants and many more applications
- **Bespoke cabin containers**
- Large range of 'off the shelf' panels held in stock

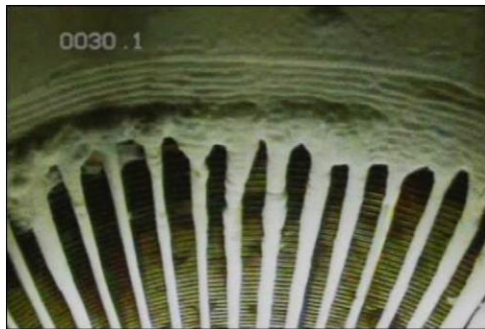




LAVAL
UNDERGROUND
SURVEYS

Laval Borehole Cameras

- Quality control
- Diagnosing Problems in Boreholes
- Understand specific areas of a borehole
- Pump failures
- Municipal applications
- Rescue Operations



Still images from **R-CAM 1000**
(Side and Downview)

CAMERA FAMILY

Series	Model	Depth (m)	Features
SC-SERIES	SC-350	110m	• Ultra Light, Compact & Portable • Manually Operated Winch • 9" Monitor with Built-in Recording • Downview Camera
	SC-500	150m	
R-CAM SERIES	R-CAM 1000	300m	• Wheeled Trolley • Powered Reel • 9" Monitor with Built-in Recording • Dual View Camera
	R-CAM 1300	400m	
DW SERIES	DW 1500	450m	• Semi-Portable • Powered with Adjustable Speed • 9" Monitor with Built-in Recording • Dual View Camera
	DW 2000	610m	• Complete System or Winch only

A full range of accessories available

geoquip

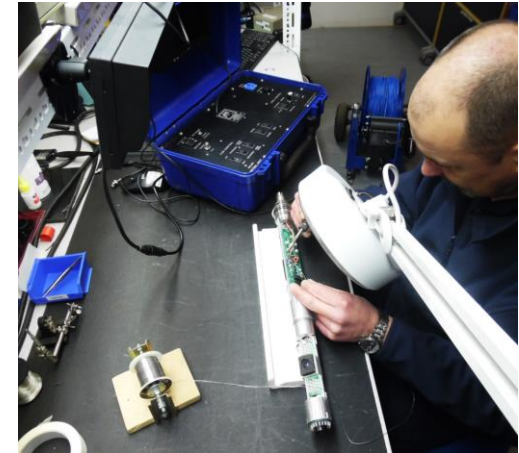
Water Solution Specialists

www.geoquipwatersolutions.com

Tel: +44(0)1473 462046 Email: info@geoquipservices.co.uk
Website: www.geoquipwatersolutions.com



Camera Repairs and Servicing



Your camera is a special tool and should be maintained accordingly.

We offer full servicing and camera repairs for Laval borehole cameras. Whether you need technical advice, spare parts our technical team are fully trained to help in every way.

"LAVAL EUROPEAN SERVICE CENTRE"

geoquip

Water Solution Specialists

www.geoquipwatersolutions.com

Tel: +44(0)1473 462046 Email: info@geoquipservices.co.uk
Website: www.geoquipwatersolutions.com



Telemetry Systems



Take Full Control of your Pumping Equipment 'Anywhere & Anytime'

- Tailored Personalised Telemetry & Process Control
- **Full Remote Access**
- Mobile Application Option
- **Remote Programming**
- Remotely Access and Archive Data
- **Multiple Data Displays**
- Customised Process Programming
- **Remote Control**
- Programmable Alarms, Events & Notifications



geoquip

Water Solution Specialists

www.geoquipwatersolutions.com

Tel: +44(0)1473 462046 Email: info@geoquipwatersolutions.co.uk
Website: www.geoquipwatersolutions.com



Export Services



- Provide end-to-end export services
- Whole project equipment solutions for the overseas water industry for the last twenty years
- We specialise in fulfilling bespoke project requirements and exporting them to remote parts of the world - Particularly where conditions and logistics can be difficult.
- Procure, package and export any piece of equipment that is needed for your water project
- Work to short lead times
- Specialists for Mining, Groundwater & Construction Dewatering



geoquip

Water Solution Specialists

www.geoquipwatersolutions.com

Tel: +44(0)1473 462046 Email: info@geoquipservices.co.uk
Website: www.geoquipwatersolutions.com



Hydrodif Fittings

Our sister company **Hydrodif Products Ltd** was formed in 1999 and started working with the **PLAST** brand. We have a wide range of fittings and accessories;



MDPE Standard Range



MDPE Universal Transition Compression fittings



PP - Compression Valves



PP—Threaded Hose Tails



uPVC Plastic Pipe



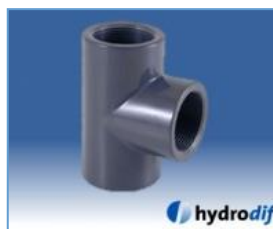
MDPE Pipe



PP - Threaded Fittings



PP- Clamp Saddles



PVC Imperial Fittings



Glues, Cements, Tools & Tape



*Please see website for full listing of WRAS approved products

12

geoquip

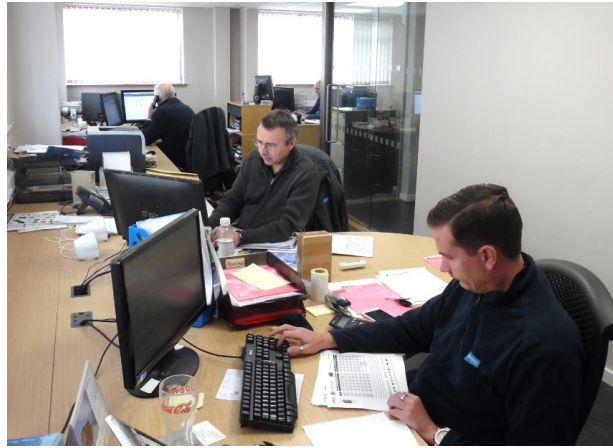
Water Solution Specialists

www.geoquipwatersolutions.com

Tel: +44(0)1473 462046 Email: info@geoquipservices.co.uk
Website: www.geoquipwatersolutions.com



Technical Support & Solutions



At Geoquip we have well over **20 years experience** in the water industry. Our technical staff can assist you with your application and answer your technical questions.

If you need one water fitting or a complete water system we can advise and help you with your enquiry.



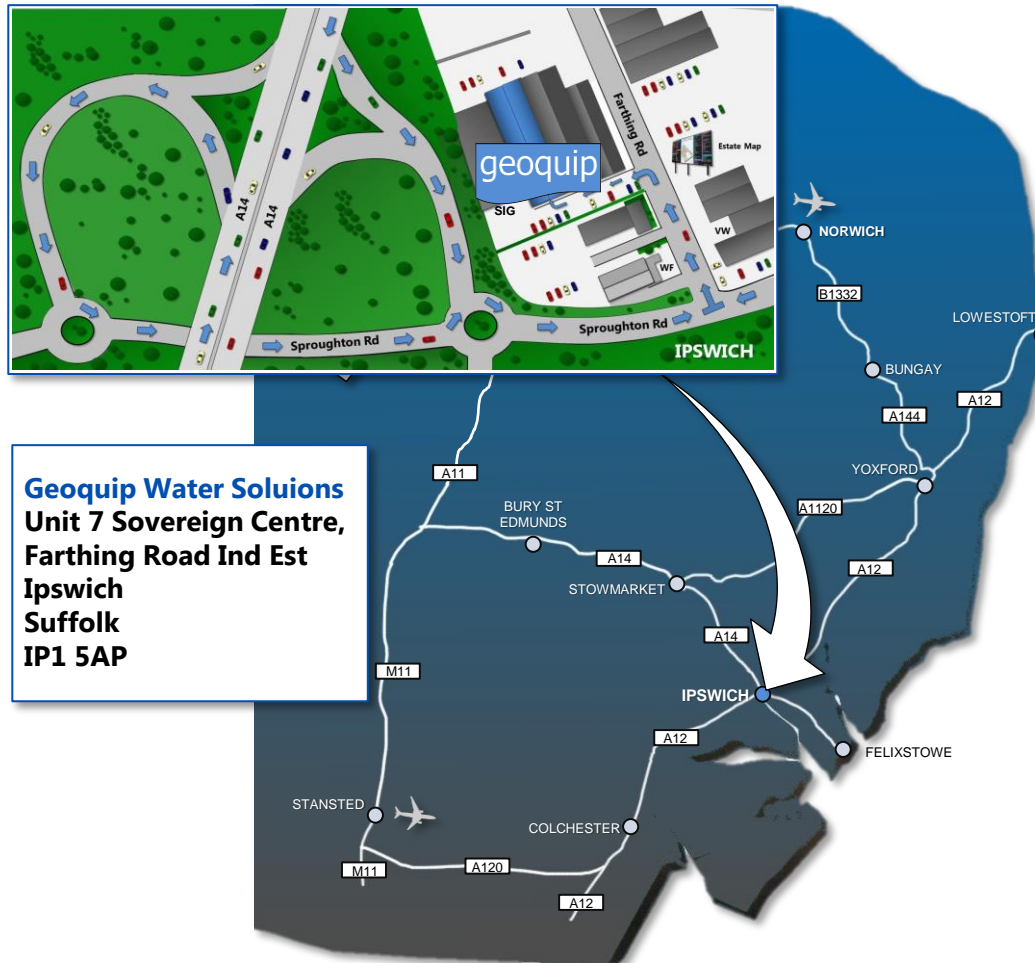
Water Solution Specialists

www.geoquipwatersolutions.com

Tel: +44(0)1473 462046 Email: info@geoquipservices.co.uk
Website: www.geoquipwatersolutions.com



How to Find us



Geoquip Water Solutions
Unit 7 Sovereign Centre,
Farthing Road Ind Est
Ipswich
Suffolk
IP1 5AP

geoquip

Water Solution Specialists

www.geoquipwatersolutions.com

Tel: +44(0)1473 462046 Email: info@geoquipservices.co.uk
Website: www.geoquipwatersolutions.com





Geoquip Water Solutions

Unit 7 Sovereign Centre, Farthing Road Industrial Estate
Ipswich, Suffolk

IP1 5AP

Tel: +44 (0) 1473 462046 / 463546

Fax: +44 (0) 1473 462146

Email: info@geoquipservices.co.uk

www.geoquipwatersolutions.com

© Copyright Geoquip Water Solutions Ltd

16

geoquip

Water Solution Specialists

www.geoquipwatersolutions.com

Tel: +44(0)1473 462046 Email: info@geoquipservices.co.uk
Website: www.geoquipwatersolutions.com

